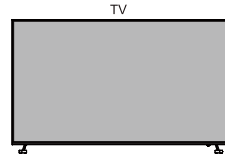
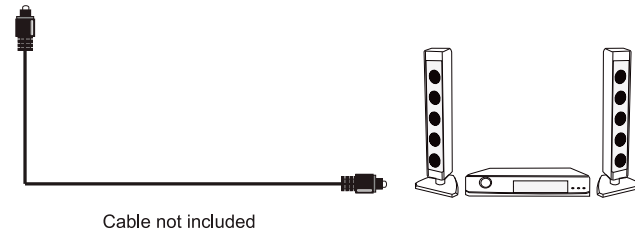


## Audio Connection

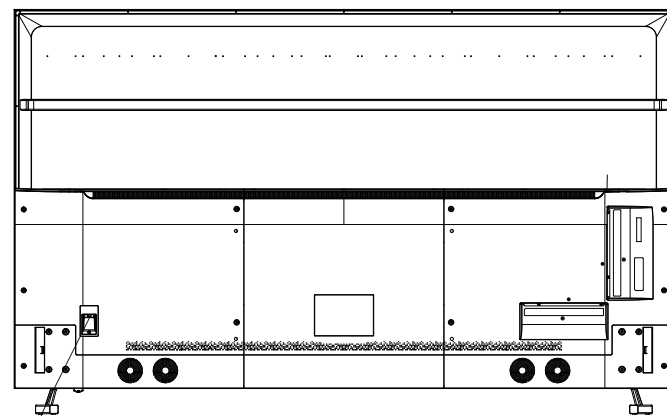
### Optical



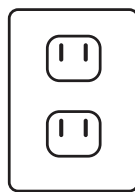
RJ45 OPTICAL  HDMI1 HDMI2 HDMI3 CVBS L R



### Connect Power Cord



Power Cord



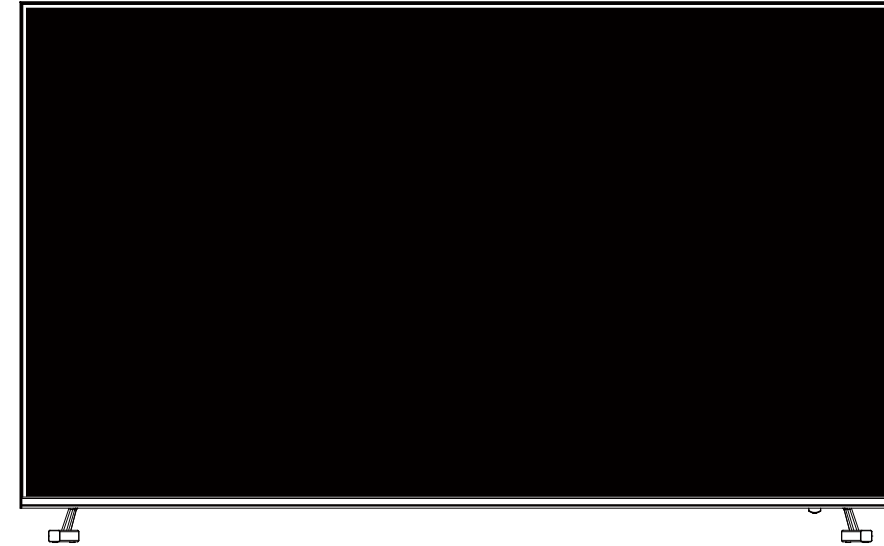
AC INPUT

**Press the POWER button on the remote control to turn on the TV**

## QUICK START GUIDE

# B·E·A

Simple Steps for Connecting  
your TV to A/V Devices



### IMPORTANT NOTE:

During setup, do NOT run the "Channel Auto Scan" function if your TV is connected to a Cable or Satellite set top box.

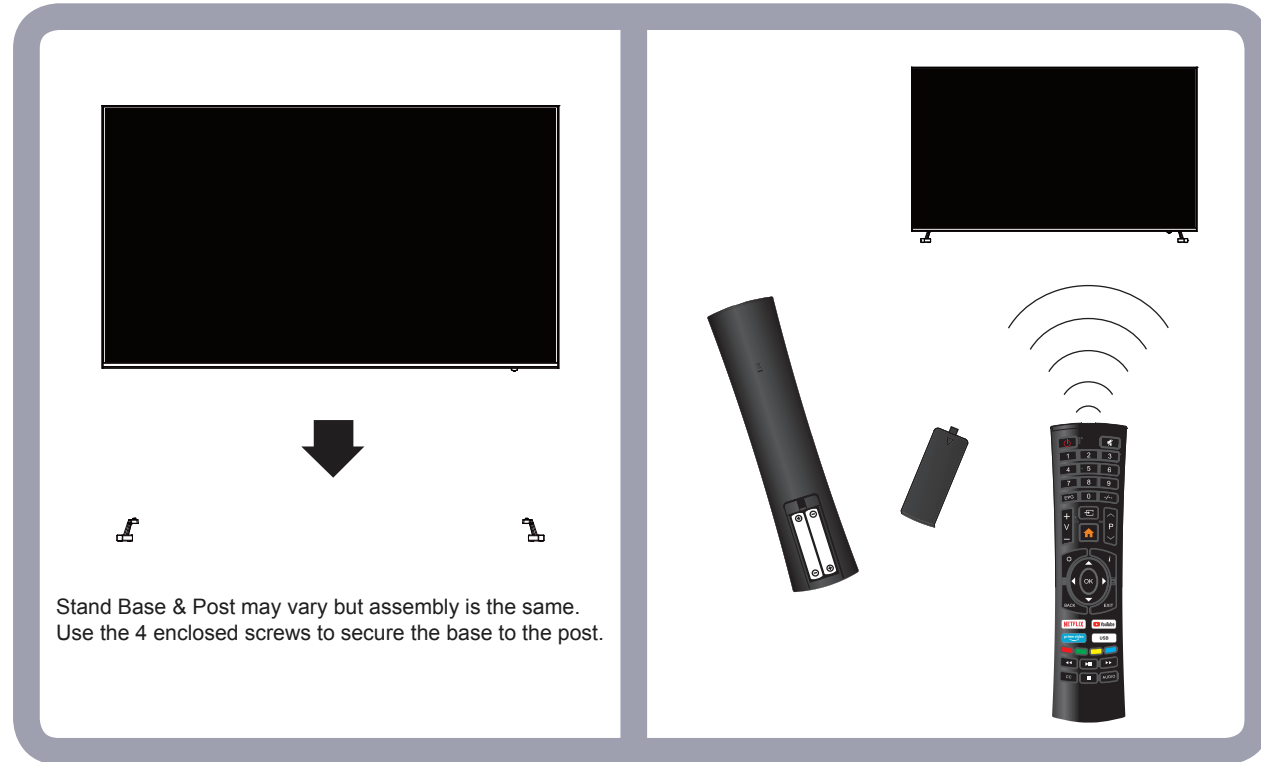
For technical support, visit our website [www.beatelevision.com](http://www.beatelevision.com) or call the BEA Technical Support Center for technical assistance or troubleshooting at 1-800-350-2376, Monday to Saturday, 10:00AM to 7:00PM EST.

### A/V Devices Include:

- Blu-ray<sup>®</sup> Disc Players
- DVD Players
- Cable, Satellite, or Set-Top Boxes
- VCRs
- Game Consoles

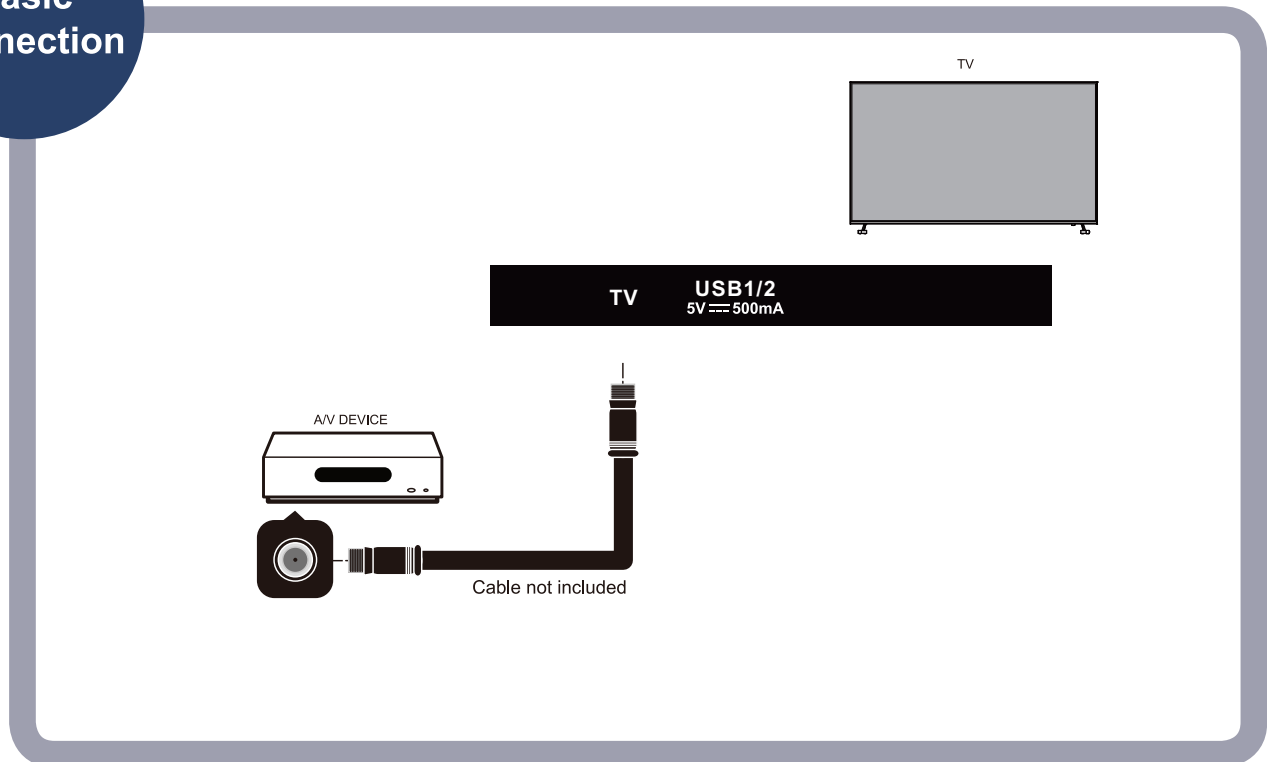
**If you need additional help, please consult your user manual.**

Insert the TV into the base and securely attach.  
Install the batteries in the Remote Control



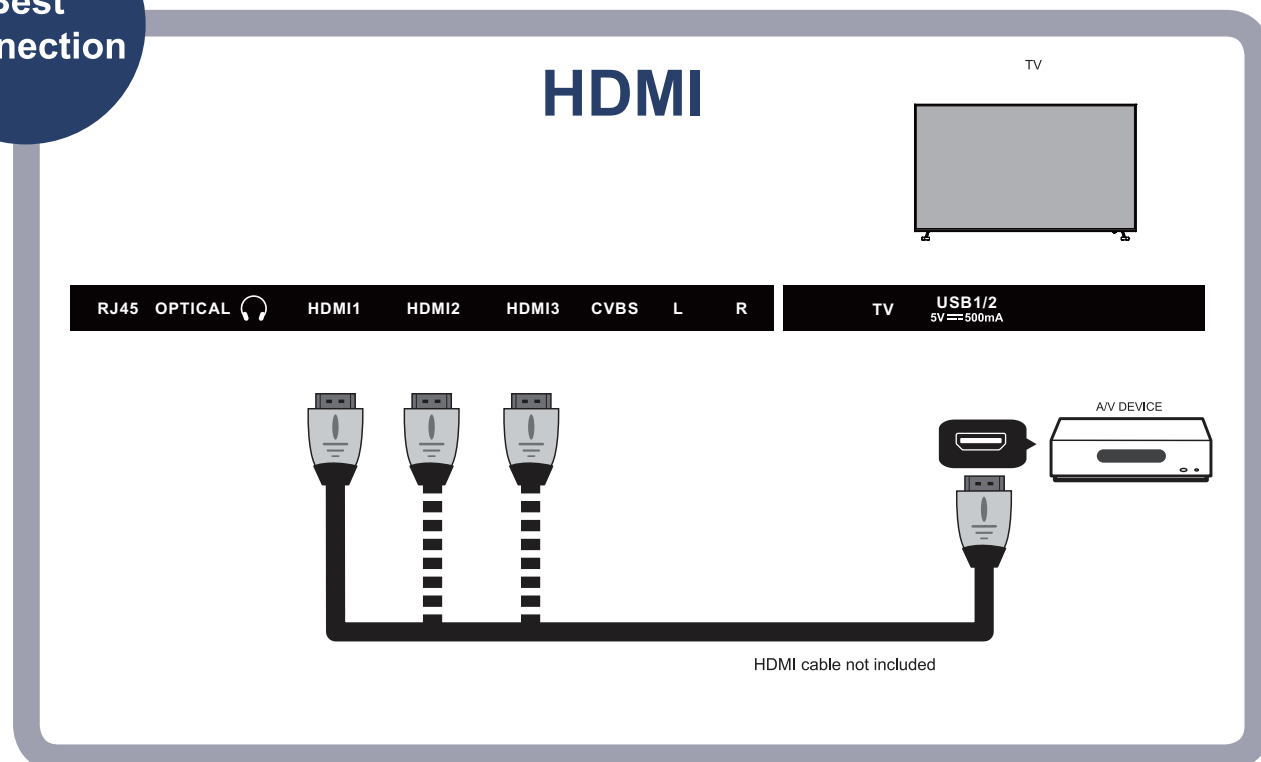
**Basic Connection**

**Coaxial / RF Cable / Antenna**



**Best Connection**

**HDMI**



**Good Connection**

**Composite**

