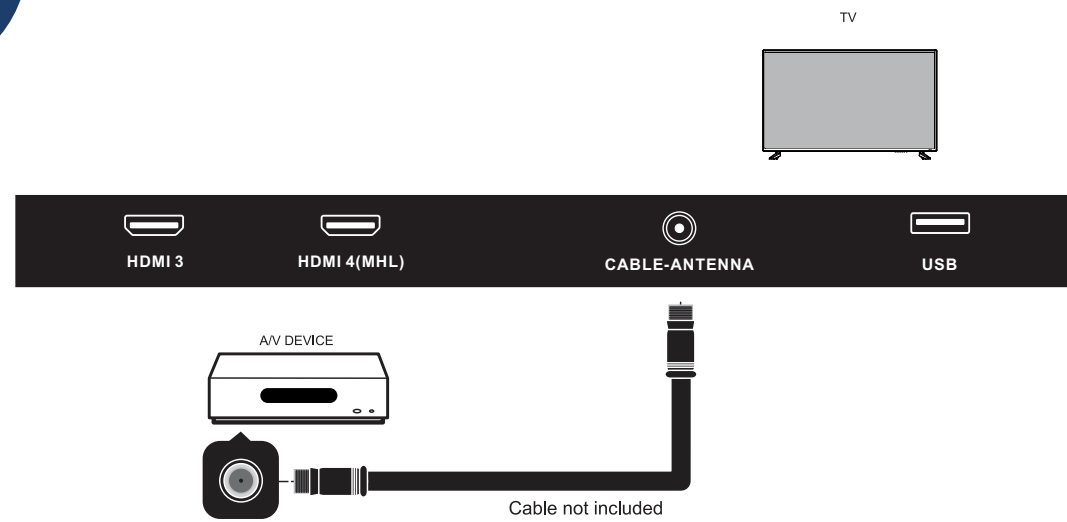
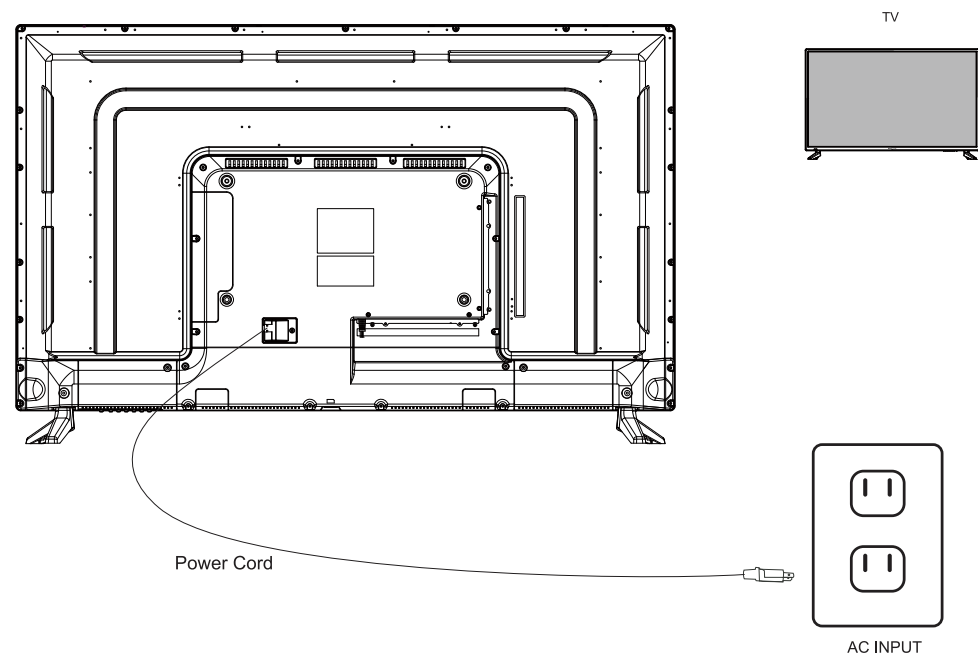


Basic Connection

Coaxial / RF Cable / Antenna



Connect Power Cord



Press the **POWER** button on the remote control to turn on the TV

QUICK START GUIDE



Simple Steps for Connecting your TV to A/V Devices



IMPORTANT NOTE:

During setup, do NOT run the “Channel Auto Scan” function if your TV is connected to a Cable or Satellite set top box.

For technical support, visit our website www.beatelevision.com or call the BEA Technical Support Center for technical assistance or troubleshooting at 1-800-350-2376, Monday to Saturday, 10:00AM to 7:00PM EST.

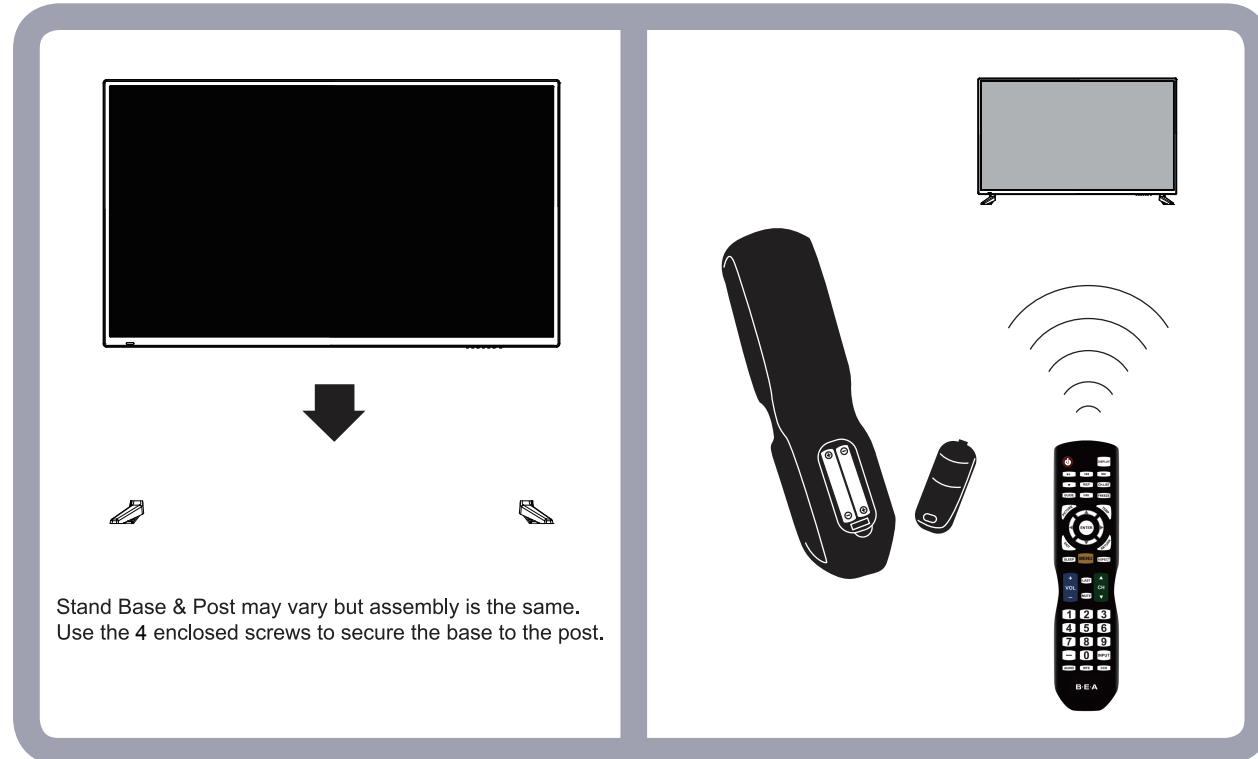
A/V Devices Include:

- Blu-ray[®] Disc Players
- DVD Players
- Cable, Satellite, or Set-Top Boxes
- VCRs
- Game Consoles

If you need additional help, please consult your user manual.

“HDMI”, the HDMI Logo and High-Definition Multimedia Interface are trademarks or registered trademarks of HDMI Licensing LLC.”
“Blu-ray Disc” is a trademark of Blu-ray Disc Association, registered in the U.S. and other countries. All other trademarks are the property of their respective owners.

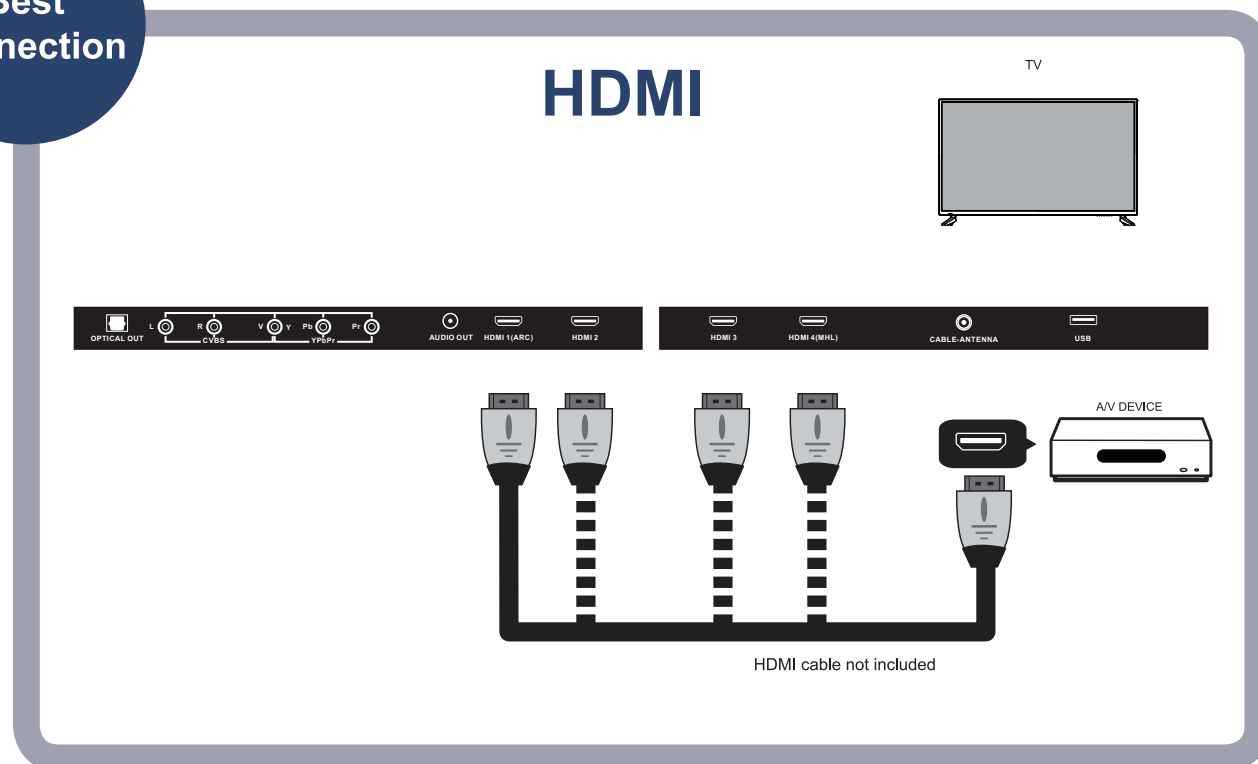
**Insert the TV into the base and securely attach.
Install the batteries in the Remote Control**



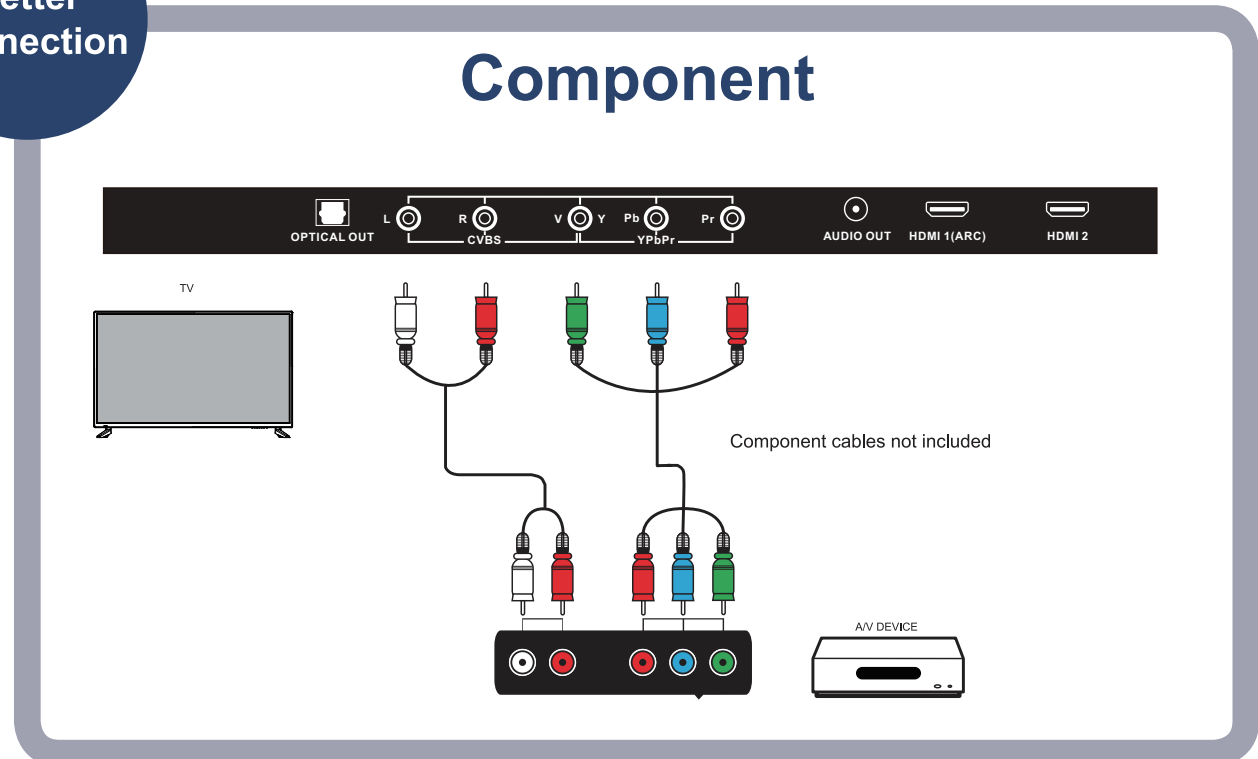
To operate this TV using the remote control provided by your Cable / Satellite provider, follow the programming instructions included with the providers remote control and input the following codes when prompted;

- For Comcast or DirecTV Remote Controls, input the code- 10030 or 12731
- For AT&T (U-verse) Remote Controls, input the code- 1043
- For RCA Universal Remote Controls, input the code- 0030
- For Dish Network Remote Controls, input the code- 506
- For Cox Remote Controls, input the code- 2397, 2049, 10030, or 12731

Best Connection



Better Connection



Good Connection

